

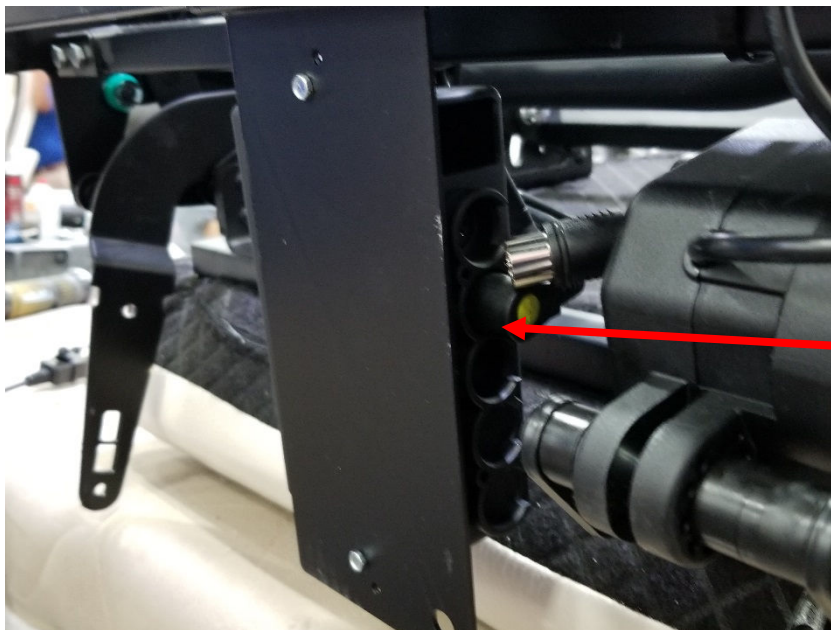
# American Leather SIM Center Seat Cushion Switch Replacement

8/15/18 P1

- Follow the link for instructions on how to remove the mechanism from the chair.
- This must be done to replace the switch cord
- [https://youtu.be/unEYE6\\_Xxjo](https://youtu.be/unEYE6_Xxjo)

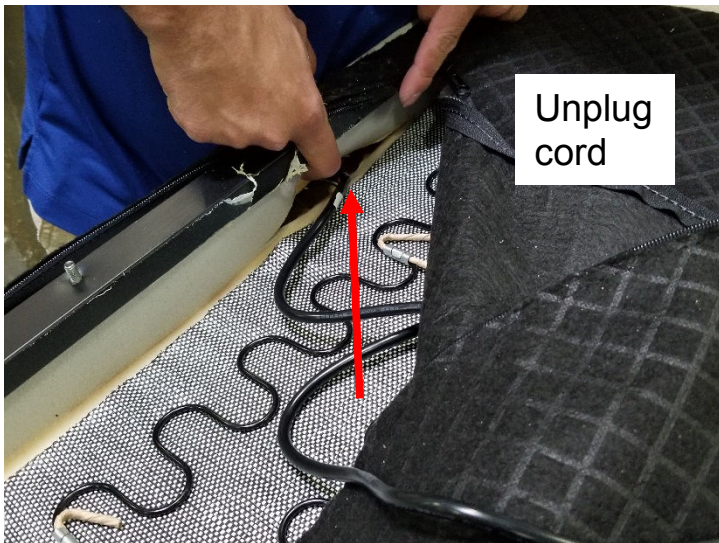


Remove 4 nuts that attach the mech to the seat cushion frame (10mm wrench)



Unplug existing switch cord from control box and cut any zip ties holding the switch cord to the mech. Remove mech from seat cushion





Open zipper to expose switch cord; cut zip ties and unplug the switch cord from the switch through a hole in the foam







Peel cover back as shown



Gently remove the switch from the wood socket



Switch is in a pocket in the cover



Remove old switch from pocket









Bend 2<sup>nd</sup> spring tab down and insert switch into the wooden socket



Press the switch into the wooden socket



Adjust cover



Close zipper on side of cushion with no switch





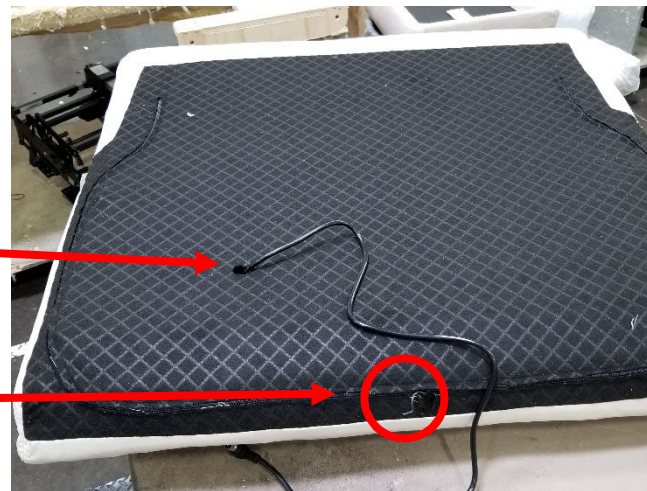


Plug new switch cord into switch through hole in the foam



Leave some slack in the cord and zip tie cord to springs in two places as shown. Trim excess tie

Route cord through hole in the bottom of the seat cushion cover and close zipper with Both zipper heads at the center of the back of the cushion





Place mech on top of seat cushion



Install 2 nuts on each side of mech



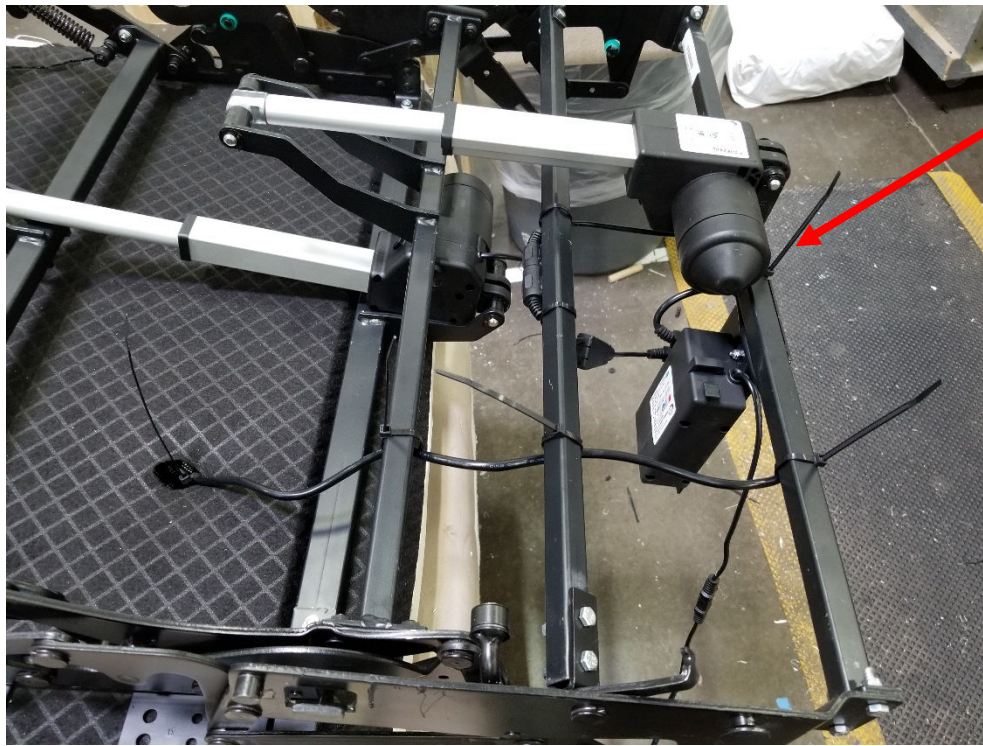
Plug switch cord into the control box.  
Zip tie the switch cord to the rear tube  
as shown





# American Leather SIM Center Seat Cushion Switch Replacement

8/15/18 P8



Plug switch cord into the control box.  
Zip tie the switch cord to the rear tube  
as shown







With Mech completely open: leave some slack in the cord, and arrange it in a straight line from the hole in the seat cushion to the back rail as shown. Push any extra cord into the seat hole before putting the zip tie onto the spring/cord below the seat hole. Cut excess off zip ties





Close and open mech a few times to make sure no cords are binding or stretching.  
Re install assembly into the chassis.

